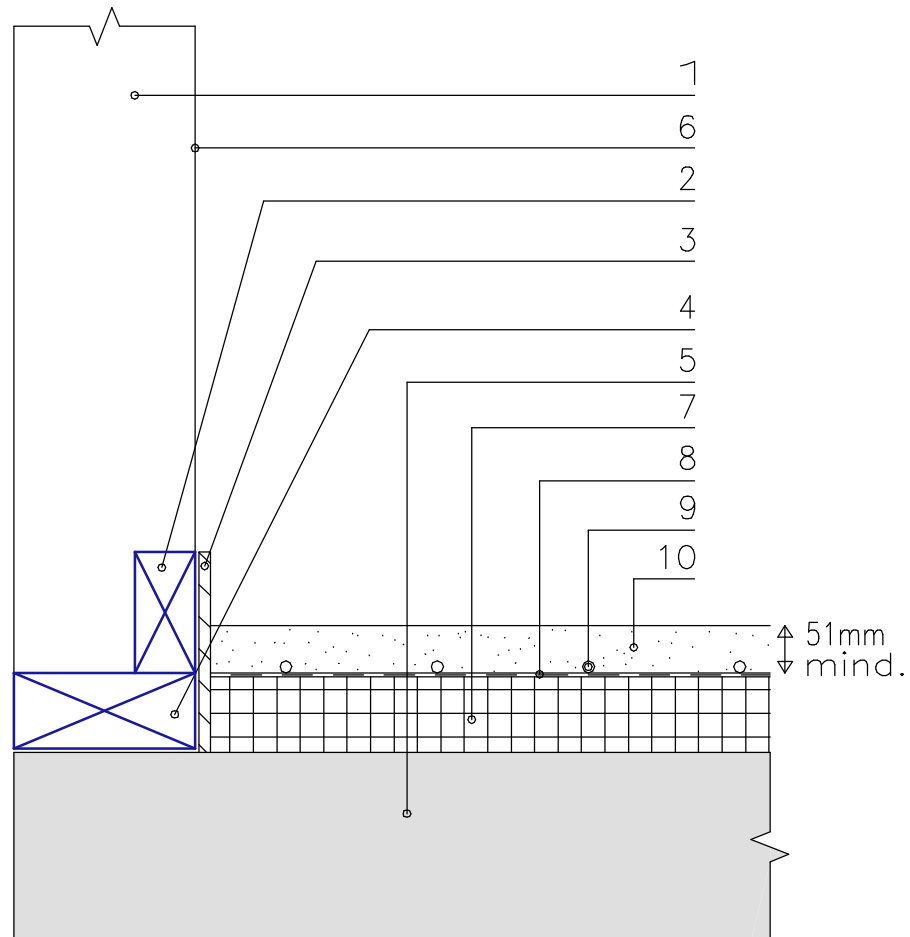


EM 490 Floor Detail

Option 2



- | | | | |
|---|----------------------------------|----|--|
| 1 | Timber Wall | 6 | Gypsum wall board lining fixed to timber frame wall at a later stage |
| 2 | Timber fixing for skirting board | 7 | Insulation Board |
| 3 | Edge expansion strip | 8 | Plastic slip barrier to create a floating floor |
| 4 | Bottom Plate | 9 | Heating Pipe 16mm |
| 5 | Concrete Floor | 10 | 490 Screed 51mm (mind.) with 16mm Water pipe |